

AHD 2.0



AHD 2.0 1080 IR Eyeball Camera 3.7mm Fixed HD Lens

ATC1080

3.7mm Fixed HD Lens, Dark Gray Housing, 12VDC



AHD 2.0 1080

1080 Megapixel AHD Video provides the superior video quality for surveillance system.

Day & Night (ICR) Optical Multi Coated Filter is suitable for Day and Night time surveillance.

DNR (2D Digital Noise Reduction) removes noises.

IP 66 Rating

1080 AHD 2.0

OSD Button

TDN & IR LEDs

12VDC

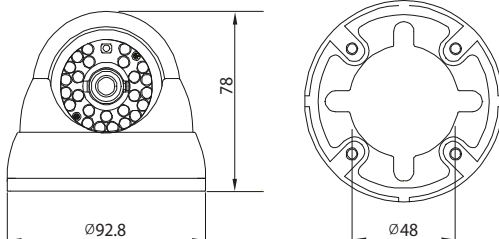
Features

- 1/2.7" Progressive Scan CMOS Sensor
- 3.7mm Fixed HD Lens
- AHD 2.0 1080P @ 30FPS
- 24 IR LEDs
- True Day & Night
- Auto White Balance
- Auto Gain Control
- Back Light Compensation
- Digital WDR
- 2D DNR
- OSD Button
- 12VDC
- Made In Korea

Specifications

Imaging Sensor	1/2.7" Megapixel CMOS Sensor
AHD Scanning System	Progressive Scan
Analog Scanning System	-
Number of Active pixels	1944 (H) × 1092 (V) = 2,122,848 (pixel)
Total Number of pixels	2010 (H) × 1108 (V) = 2,227,080 (pixel)
S/N Ratio	More than 50dB (AGC OFF)
AHD Video Output	AHD 1920 X 1080
Analog Video Output	-
Min.Illumination	0 Lux with IR LEDs ON
Lens	3.7mm Fixed Focus HD Lens
Electronic Shutter Speed	Auto, 1/25,30,50,60,100,120,250,500,1000,3000,10000sec
White Balance	AWB (INDOOR or OUTDOOR), USER, 8000K, 6000K, 4200K, 3200K, HOLD
Backlight Compensation	0~16, Center Weight
Auto Gain Control	1~5
Flickerness	OFF, 50HZ, 60HZ
Lens Shading Compensation	OFF, ON
Special Features	Privacy Zone, Motion, HLC
Adjust	COLOR GAIN, COLOR HUE, SHARPNESS, CONTRAST, BRIGHT
Language	English (Selectable)
Day & Night	AUTO, B&W, COLOR, EXT
2D DNR	Set as Default
D-WDR	Set as Default
Privacy Masking	On (2 Zone Selectable) / Off
Motion Detection	On (Sensitivity Selectable) / Off
D-EFFECT	MIRROR, FLIP
IR LED	24pcs IR LED
Construction	Aluminum Die-Casting body
Operating Temp	-10 °C ~ 50 °C (14 °F ~ 122 °F)
Storage Temp	-20 °C ~ 60 °C (4 °F ~ 140 °F)
Humidity	0% to 90%
Supplied Voltage	DC12V±10%
Power Consumption	80mA, Max. 280mA IR LEDs On
Dimension(WxHxD)	Ø 92.8 x 78mm (Ø3.65 X 3.07(H) inch)
Weight	Appx. 0.66 lb
Certification	CE, FCC

Dimensions (Unit: mm)



Design and specifications are subject to change without notice.