

AHD 2.0



AHD 2.0 1080 Vandal Dome IR Camera 2.8~12mm Vari Focal HD Lens

AVD1080V

2.8~12mm Vari Focal HD Lens, White Housing, 12VDC

AHD 2.0 1080

1080 Megapixel AHD Video provides the superior video quality for surveillance system.

Day & Night (ICR) Optical Multi Coated Filter is suitable for Day and Night time surveillance.

DNR (2D Digital Noise Reduction) removes noises.

IP66



1080 AHD 2.0

OSD Button

TDN & IR LEDs

12VDC

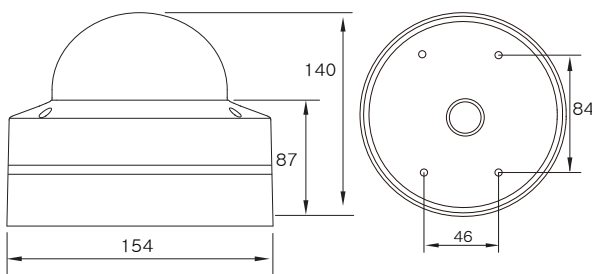
Features

- 1/2.7" Progressive Scan CMOS Sensor
- 2.8~12mm Vari Focal HD Lens
- AHD 2.0 1080P @ 30FPS
- 32 IR LEDs
- True Day & Night
- Auto White Balance
- Auto Gain Control
- Back Light Compensation
- Digital WDR
- 2D DNR
- OSD Button
- 12VDC
- Made In Korea

Specifications

Imaging Sensor	1/2.7" Megapixel CMOS Sensor
AHD Scanning System	Progressive Scan
Analog Scanning System	-
Number of Active pixels	1944 (H) × 1092 (V) = 2,122,848 (pixel)
Total Number of pixels	2010 (H) × 1108 (V) = 2,227,080 (pixel)
S/N Ratio	More than 50dB (AGC OFF)
AHD Video Output	AHD 1920 X 1080
Analog Video Output	-
Min.Illumination	0 Lux with IR LEDs ON
Lens	2.8~12mm Vari Focal HD Lens
Electronic Shutter Speed	Auto, 1/25,30,50,60,100,120,250,500,1000,3000,10000sec
White Balance	AWB (INDOOR or OUTDOOR), USER, 8000K, 6000K, 4200K, 3200K, HOLD
Backlight Compensation	0~16, Center Weight
Auto Gain Control	1~5
Flickerness	OFF, 50HZ, 60HZ
Lens Shading Compensation	OFF, ON
Special Features	Privacy Zone, Motion, HLC
Adjust	COLOR GAIN, COLOR HUE, SHARPNESS, CONTRAST, BRIGHT
Language	English (Selectable)
Day & Night	AUTO, B&W, COLOR, EXT
2D DNR	Set as Default
D-WDR	Set as Default
Privacy Masking	On (2 Zone Selectable) / Off
Motion Detection	On (Sensitivity Selectable) / Off
D-EFFECT	MIRROR, FLIP
IR LED	32pcs IR LED
Construction	Aluminum Die-Casting body
Operating Temp	-10 °C ~ 50 °C (14 °F ~ 122 °F)
Storage Temp	-20 °C ~ 60 °C (4 °F ~ 140 °F)
Humidity	0% to 90%
Supplied Voltage	DC12V±10%
Power Consumption	80mA, Max. 320mA IR LEDs On
Dimension(WxHxD)	Ø154 x 140(H)mm (Ø6.06 x 5.514(H) inch)
Weight	Appx. 3,000g (1.35 lbs)
Certification	CE, FCC

Dimensions (Unit: mm)



Design and specifications are subject to change without notice.

